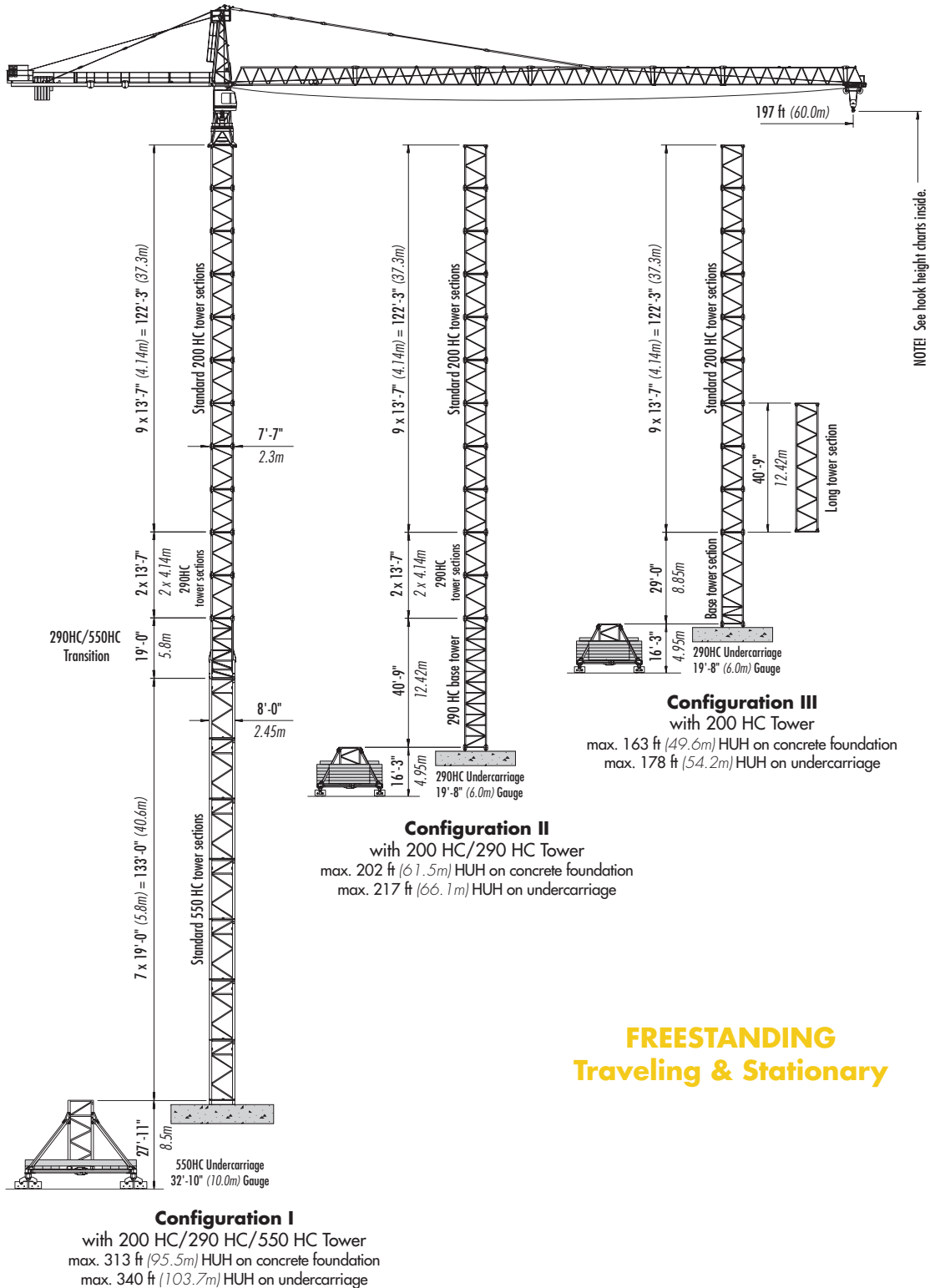


# LIEBHERR 200 HC

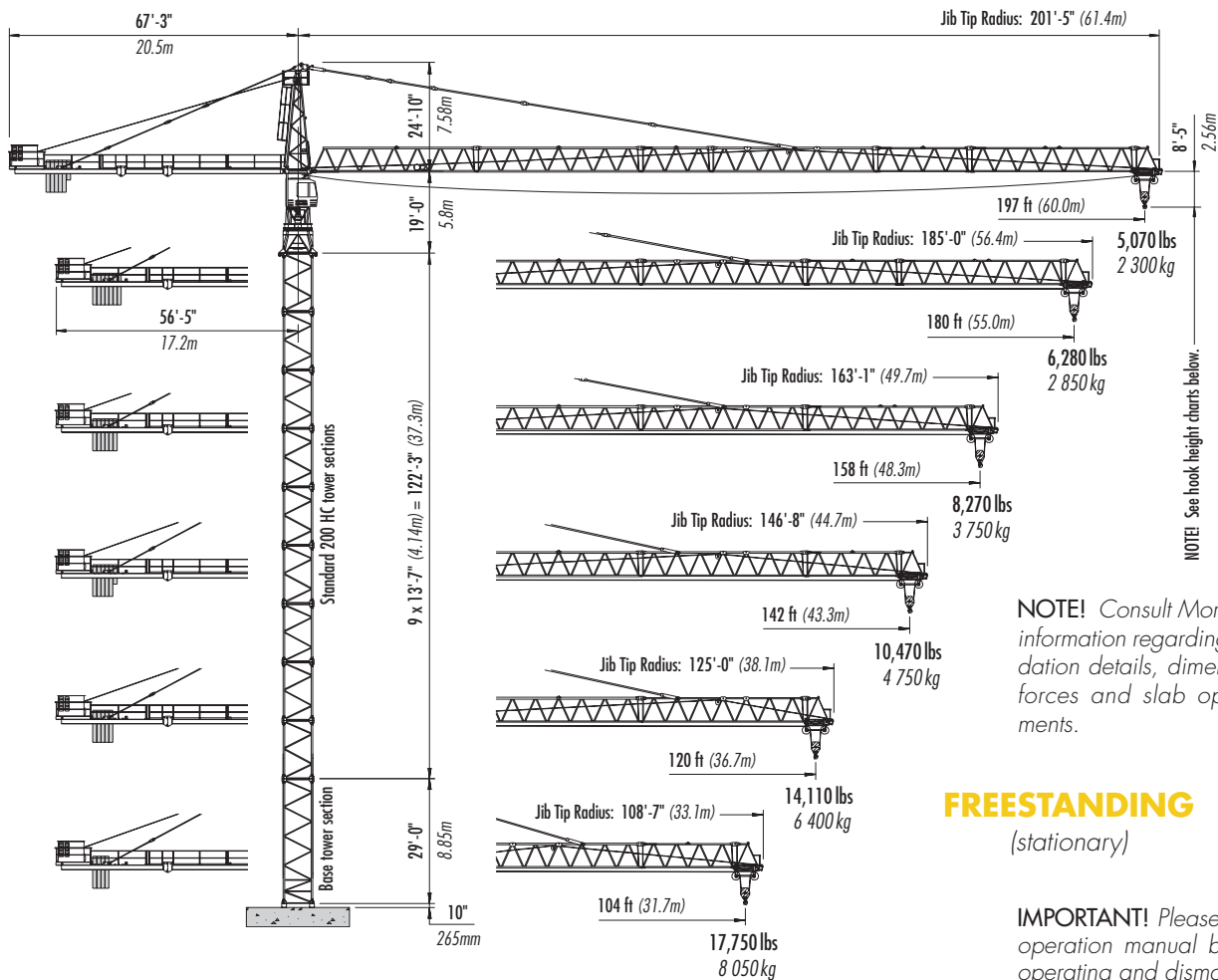
## TOWER CRANE



# Morrow Equipment

# Configurations

# LIEBHERR 200 HC



NOTE! Consult Morrow for specific information regarding alternate foundation details, dimensions, reaction forces and slab opening requirements.

## FREESTANDING (stationary)

IMPORTANT! Please consult crane's operation manual before erecting, operating and dismantling crane.

## HOOK HEIGHTS

No. of Tower Sections	Tower Configuration I	Hook Height Concrete Foundation		Hook Height 10m Undercarriage	
		ft	m	ft	m
1	550HC STS	30.6	9.3	57.6	17.5
2	550HC STS	49.7	15.1	76.7	23.3
3	550HC STS	68.7	20.9	95.7	29.1
4	550HC STS	87.7	26.7	114.7	34.9
5	550HC STS	106.8	32.5	133.7	40.7
6	550HC STS	125.8	38.3	152.7	46.5
7	550HC STS	144.8	44.1	171.7	52.3
8	Transition	163.9	49.9	190.8	58.1
9	290HC STS	177.4	54.1	204.3	62.3
10	290HC STS	191.0	58.2	217.9	66.4
11	200HC STS	204.6	62.4	231.5	70.6
12	200HC STS	218.2	66.5	245.1	74.7
13	200HC STS	231.7	70.6	258.7	78.8
14	200HC STS	245.3	74.8	272.2	83.0
15	200HC STS	258.9	78.9	285.8	87.1
16	200HC STS	272.5	83.1	299.4	91.3
17	200HC STS	286.1	87.2	313.0	95.4
18	200HC STS	299.7	91.3	326.6	99.5
19 <sup>1</sup>	200HC STS	313.3	95.5	340.2	103.7

No. of Tower Sections	Tower Configuration II	Hook Height Concrete Foundation		Hook Height 6m Undercarriage	
		ft	m	ft	m
0	290HC BTS-40	52.2	15.9	67.3	20.5
1	290HC STS	65.8	20.1	80.9	24.7
2	290HC STS	79.4	24.2	94.5	28.8
3	200HC STS	93.0	28.3	108.1	32.9
4	200HC STS	106.6	32.5	121.6	37.1
5	200HC STS	120.1	36.6	135.2	41.2
6	200HC STS	133.7	40.8	148.8	45.4
7	200HC STS	147.3	44.9	162.4	49.5
8	200HC STS	160.9	49.0	176.0	53.6
9	200HC STS	174.5	53.2	189.6	57.8
10	200HC STS	188.1	57.3	203.1	61.9
11 <sup>2</sup>	200HC STS	201.6	61.5	216.7	66.1

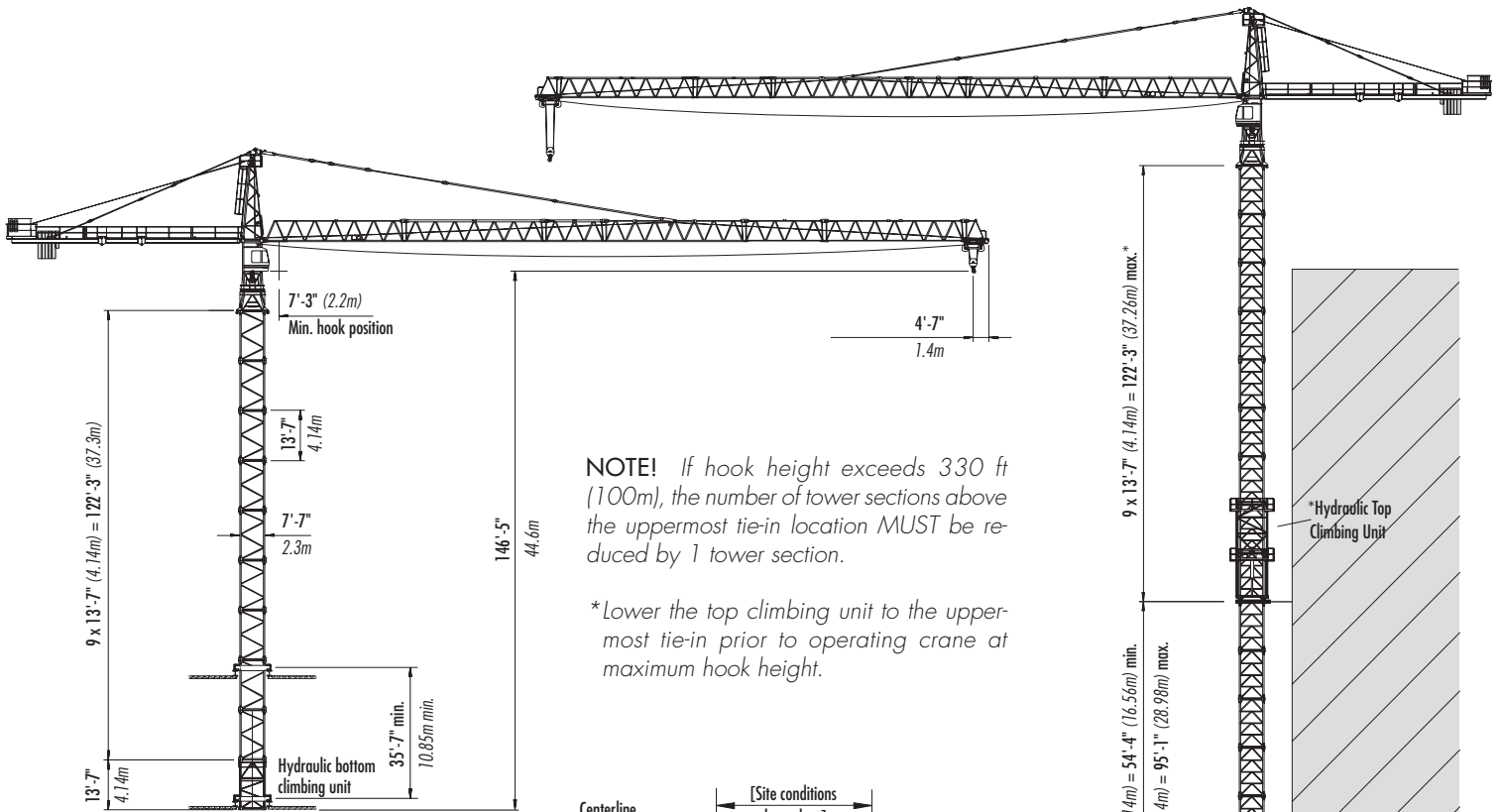
No. of Tower Sections	Tower Configuration III	Hook Height Concrete Foundation		Hook Height 6m Undercarriage	
		ft	m	ft	m
0	200HC BTS-29	40.4	12.3	55.4	16.9
1	200HC STS	54.1	16.5	69.2	21.1
2	200HC STS	67.6	20.6	82.7	25.2
3	200HC STS	81.4	24.8	96.5	29.4
4	200HC STS	94.8	28.9	109.9	33.5
5	200HC STS	108.3	33.0	123.4	37.6
6	200HC STS	122.0	37.2	137.1	41.8
7	200HC STS	135.5	41.3	150.6	45.9
8	200HC STS	149.3	45.5	164.4	50.1
9 <sup>2</sup>	200HC STS	162.7	49.6	177.8	54.2

<sup>1</sup> Remove top climbing unit from crane prior to operating crane at maximum hook height.  
<sup>2</sup> Lower top climbing unit to base of crane prior to operating crane at maximum hook height.

NOTE! Alternate tower combinations are possible. Contact Morrow for additional information.

# Configurations

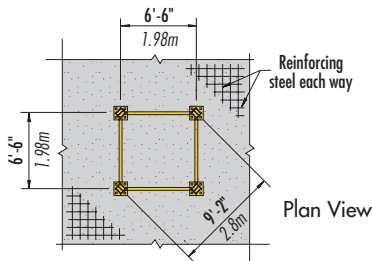
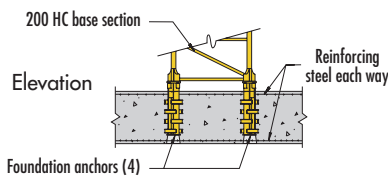
# LIEBHERR 200 HC



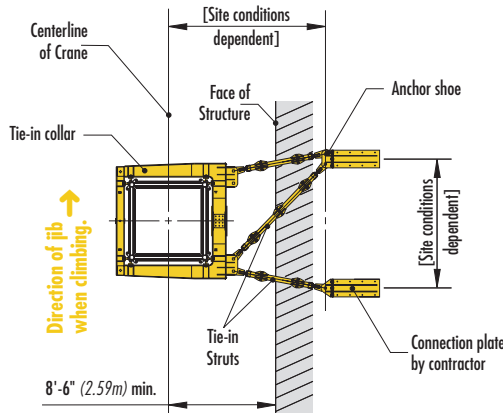
**NOTE!** If hook height exceeds 330 ft (100m), the number of tower sections above the uppermost tie-in location **MUST** be reduced by 1 tower section.

\*Lower the top climbing unit to the uppermost tie-in prior to operating crane at maximum hook height.

## BOTTOM CLIMBING with 200 HC Tower Sections (inside structure)

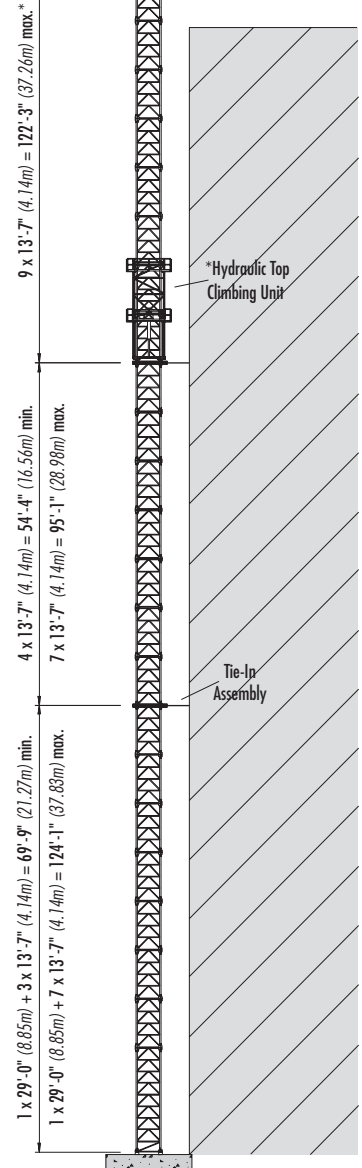


## FOUNDATION DETAILS with 200 HC Base Tower (on concrete slab)



## TIE-IN ASSEMBLY (plan view)

**NOTE!** The tie-in assembly shown is an example of a typical installation. Please note, however, that factors determining the installation of tie-in assemblies may vary due to project specific criteria. Contact Morrow for information regarding dimensions, reaction forces, tie-in locations and slab opening requirements.



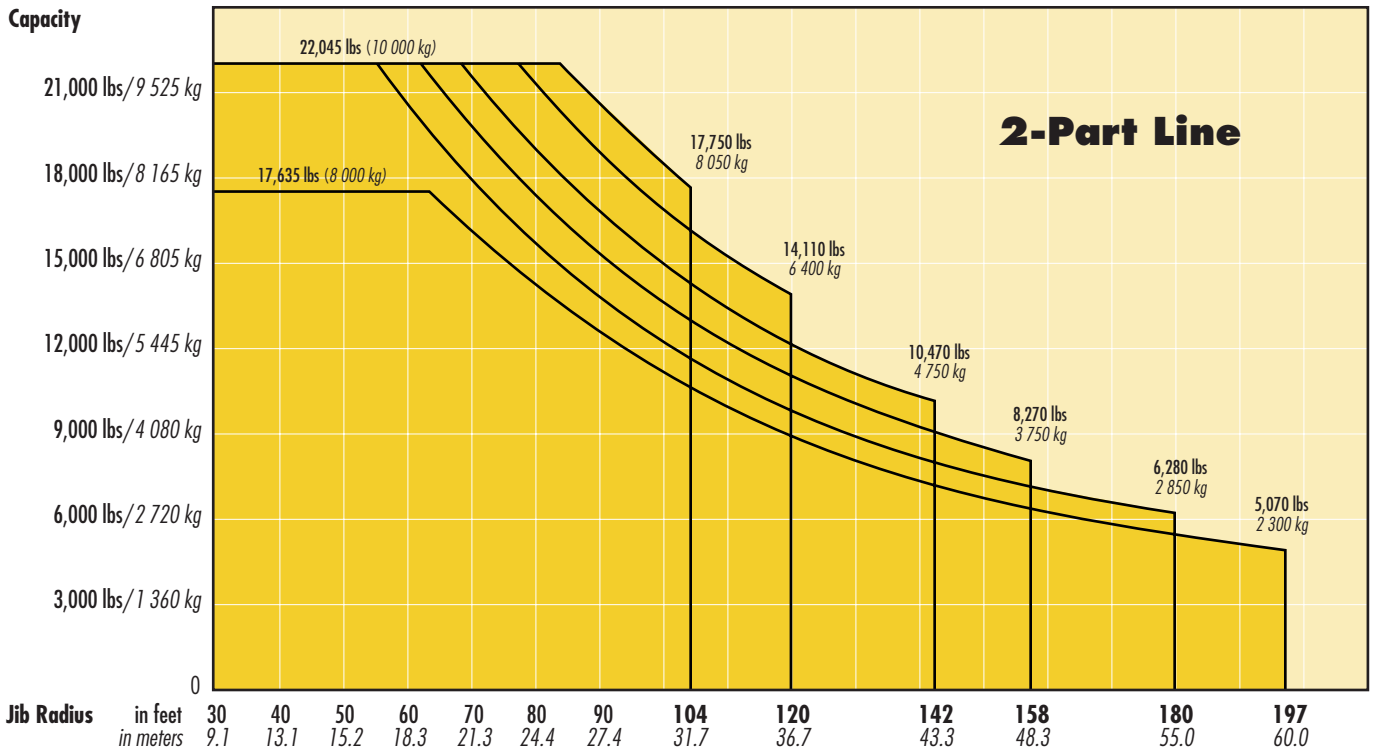
## TOP CLIMBING with 200 HC Tower Sections (tied to structure)

# Radius and Capacities

## LIEBHERR Tower Crane Model 200 HC

### 2-Part Line

Hook Radius	2-Part Line Max Capacity – Radius	ft m	60 18.3	70 21.3	80 24.4	90 27.4	98 30.0	104 31.7	110 33.5	120 36.7	130 39.6	142 43.3	150 45.7	158 48.3	164 50.0	170 51.8	180 55.0	187 57.0	197 60.0
197 ft 60.0m	17,635 lbs – 63.3 ft 8 000 kg – 19.3m	lbs kg	17,635 8 000	16,525 7 495	14,795 6 710	13,120 5 950	11,355 5 150	10,715 4 860	10,140 4 600	9,125 4 140	8,445 3 830	7,560 3 430	7,130 3 235	6,660 3 020	6,370 2 890	6,140 2 785	5,665 2 570	5,425 2 460	<b>5,070</b> <b>2 300</b>
180 ft 55.0m	22,045 lbs – 55.1 ft 10 000 kg – 16.8m	lbs kg	20,770 9 420	18,000 8 170	15,790 7 160	14,180 6 430	12,500 5 670	11,800 5 350	11,090 5 030	10,050 4 560	9,190 4 170	8,360 3 790	7,810 3 540	7,360 3 340	7,055 3 200	6,790 3 080	<b>6,280</b> <b>2 850</b>		
158 ft 48.3m	22,045 lbs – 61.7 ft 10 000 kg – 18.8m	lbs kg	22,045 10 000	20,000 9 070	17,570 7 970	15,660 7 100	13,930 6 320	13,140 5 960	12,300 5 580	11,250 5 100	10,250 4 650	9,370 4 250	<b>8,750</b> <b>3 970</b>	<b>8,270</b> <b>3 750</b>					
142 ft 43.3m	22,045 lbs – 68.6 ft 10 000 kg – 20.9m	lbs kg	22,045 10 000	21,960 9 960	19,450 8 820	17,330 7 860	15,475 7 020	14,640 6 640	13,650 6 190	12,350 5 600	11,420 5 180	<b>10,470</b> <b>4 750</b>							
120 ft 36.7m	22,045 lbs – 77.1 ft 10 000 kg – 23.5m	lbs kg	22,045 10 000	22,045 10 000	21,630 9 810	19,400 8 800	17,370 7 880	16,430 7 450	15,280 6 930	<b>14,110</b> <b>6 400</b>									
104 ft 31.7m	22,045 lbs – 83.7 ft 10 000 kg – 25.5m	lbs kg	22,045 10 000	22,045 10 000	22,045 10 000	20,930 9 490	18,760 8 510	<b>17,750</b> <b>8 050</b>											



# SPECIFICATIONS

## LIEBHERR Tower Crane Model 200 HC

### Hoist Speed and Capacity

Hoist Unit	WiW 281 RX 057	2-Part Line				
		Gear	Capacity	Line Speed	Capacity	Line Speed
108 hp (80 kW) AC hoist unit 3-speed gearbox Electromagnetic gear shifting Eddy current brake	2L-142	1	up to 22,045 lbs	@ 108 fpm	up to 10 000 kg	@ 33 m/min
		2	up to 9,920 lbs	@ 289 fpm	up to 4 500 kg	@ 88 m/min
		3	up to 3,970 lbs	@ 587 fpm	up to 1 800 kg	@ 179 m/min

**NOTE!** Capacities and line speeds indicated will vary depending on the amount of hoist rope installed. This crane model may be equipped with a hoist unit other than that specified in the data above. To verify, check the serial number of the crane and refer to the Liebherr 200 HC Operation Manual for additional information.

### Motor Information

Drive Unit	Horsepower	Kilowatts	Speed	
Trolley	6.4 hp	4.8 kW	40 - 131 - 262 fpm	12 - 40 - 80 m/min
Swing (fluid coupling)	2 x 6.7 hp	2 x 5.0 kW	0.8 rpm	
Traveling (fluid coupling)	2 x 10 hp	2 x 7.5 kW	82 fpm	25.0 m/min

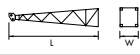
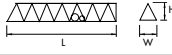

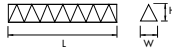
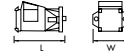
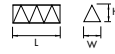
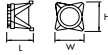
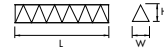
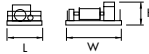
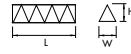
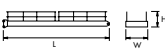
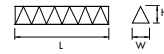

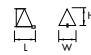
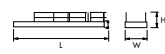
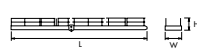
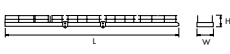
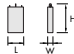
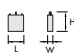

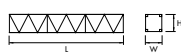
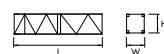





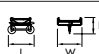
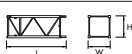

### Power Requirements

480 V — 3-phase — 60 Hz — 225 Amperes

Specifications subject to change without prior notice. For additional information, contact Morrow Equipment.

# Component List

# LIEBHERR 200 HC

Description	Dimensions L x W x H	Weight	Description	Dimensions L x W x H	Weight
Tower Top	 25'-2" x 6'-0" x 5'-5" 7.67m x 1.83m x 1.65m	4,400 lbs 1 995 kg	Jib Section ① #611	 39'-6" x 6'-0" x 6'-5" 12.03m x 1.84m x 1.95m	4,870 lbs 2 210 kg
Slewing Assembly (Complete) <sup>1</sup>	 20'-2" x 9'-0" x 8'-6" 6.15m x 2.74m x 2.59m	17,600 lbs 7 985 kg	Jib Section ② #621	 39'-3" x 5'-4" x 6'-0" 11.97m x 1.63m x 1.84m	3,595 lbs 1 630 kg
Slewing Assembly Upper Part <sup>2</sup>	 14'-0" x 9'-0" x 8'-2" 4.26m x 2.74m x 2.49m	10,800 lbs 4 900 kg	Jib Section ③ #633	 17'-8" x 5'-4" x 6'-2" 5.38m x 1.63m x 1.88m	1,145 lbs 520 kg
Slewing Assembly Lower Part <sup>3</sup>	 6'-3" x 7'-7" x 7'-2" 1.9m x 2.3m x 2.18m	6,800 lbs 3 085 kg	Jib Section ④ #622	 39'-2" x 5'-4" x 6'-0" 11.94m x 1.63m x 1.84m	3,375 lbs 1 530 kg
Hoist Unit with Frame <sup>4</sup> 108 hp (80 kW)	 7'-11" x 15'-2" x 6'-7" 2.41m x 4.62m x 2.0m	11,860 lbs 5 380 kg	Jib Section ⑤ #631	 22'-10" x 5'-4" x 6'-0" 6.97m x 1.63m x 1.84m	1,600 lbs 725 kg
Counterjib Section #1 (Inner)	 27'-3" x 5'-8" x 4'-5" 8.31m x 1.73m x 1.35m	3,800 lbs 1 725 kg	Jib Section ⑥ #632	 39'-3" x 5'-4" x 6'-0" 11.97m x 1.63m x 1.84m	2,170 lbs 985 kg
Counterjib Section #2 (Intermediate)	 11'-5" x 5'-8" x 4'-5" 3.48m x 1.73m x 1.35m	2,115 lbs 960 kg	Jib Section ⑦ #641	 6'-11" x 6'-0" x 6'-1" 2.1m x 1.84m x 1.86m	620 lbs 280 kg
Counterjib Section #3 (Outer)	 25'-0" x 7'-10" x 5'-4" 7.62m x 2.4m x 1.62m	4,200 lbs 1 905 kg	Jib Assembly <sup>7</sup> 197-ft (60.0m)	①②③④⑤⑥⑦ 198'-9" x 6'-0" x 6'-5" 60.58m x 1.84m x 1.95m	20,295 lbs 9 205 kg
Counterjib A <sup>5</sup>	 52'-0" x 7'-10" x 5'-4" 15.85m x 2.4m x 1.62m	9,040 lbs 4 100 kg	Jib Assembly <sup>7</sup> 180-ft (55.0m)	①②④⑤⑥⑦ 182'-4" x 6'-0" x 6'-5" 55.58m x 1.84m x 1.95m	18,960 lbs 8 600 kg
Counterjib B <sup>6</sup>	 62'-10" x 7'-10" x 5'-4" 19.15m x 2.4m x 1.62m	11,350 lbs 5 150 kg	Jib Assembly <sup>7</sup> 158-ft (48.3m)	①②④⑥⑦ 160'-4" x 6'-0" x 6'-5" 48.88m x 1.84m x 1.95m	17,195 lbs 7 800 kg
Counterweight Block A	 4'-4" x 11" x 7'-2" 1.32m x 0.28m x 2.18m	4,255 lbs 1 930 kg	Jib Assembly <sup>7</sup> 142-ft (43.3m)	①②④⑤⑦ 144'-0" x 6'-0" x 6'-5" 43.88m x 1.84m x 1.95m	16,315 lbs 7 400 kg
Counterweight Block B	 4'-4" x 11" x 4'-6" 1.32m x 0.28m x 1.38m	2,645 lbs 1 200 kg	Jib Assembly <sup>7</sup> 120-ft (36.7m)	①②④⑦ 122'-4" x 6'-0" x 6'-5" 37.28m x 1.84m x 1.95m	14,770 lbs 6 700 kg
Base Tower Section 200 HC	 29'-0" x 7'-7" x 7'-7" 8.85m x 2.3m x 2.3m	8,960 lbs 4 065 kg	Jib Assembly <sup>7</sup> 104-ft (31.7m)	①④⑤⑦ 105'-11" x 6'-0" x 6'-5" 32.28m x 1.84m x 1.95m	12,345 lbs 5 600 kg
Long Tower Section 200 HC	 40'-9" x 7'-7" x 7'-7" 12.42m x 2.3m x 2.3m	11,245 lbs 5 100 kg	Top Climbing Unit w/hydraulics	 27'-6" x 9'-9" x 9'-3" 8.38m x 2.97m x 2.82m	16,535 lbs 7 500 kg
Standard Tower Section 200 HC	 13'-7" x 7'-7" x 7'-7" 4.14m x 2.3m x 2.3m	4,520 lbs 2 050 kg	Bottom Climbing Unit w/hydraulics	 13'-7" x 7'-10" x 7'-10" 4.14m x 2.4m x 2.4m	9,150 lbs 4 150 kg
Base Tower Section 290 HC	 40'-9" x 7'-7" x 7'-7" 12.42m x 2.3m x 2.3m	17,505 lbs 7 940 kg	Hook Block	 2'-2" x 1'-0" x 3'-8" 0.66m x 0.3m x 1.12m	970 lbs 440 kg
Standard Tower Section 290 HC	 13'-7" x 7'-7" x 7'-7" 4.14m x 2.3m x 2.3m	5,025 lbs 2 280 kg	Trolley	 6'-7" x 6'-3" x 3'-2" 2.0m x 1.9m x 0.97m	825 lbs 375 kg
Standard Tower Section 550 HC	 20'-7" x 7'-11" x 7'-11" 6.28m x 2.41m x 2.41m	13,340 lbs 6 050 kg	Transition Section 550 HC/290 HC	 20'-7" x 8'-5" x 8'-5" 6.28m x 2.57m x 2.57m	14,330 lbs 6 500 kg

**NOTE:** Weights and dimensions are approximate. Scale components before lifting.

<sup>1</sup> Includes operator's cab, swing motors, slewing ring, slewing ring support and climbing shoes. Two climbing shoes are detachable; deduct 100 lbs (45 kg) each. Dimensions shown are without detachable climbing shoes.

<sup>2</sup> Includes operator's cab and swing motors.

<sup>3</sup> Includes slewing ring, slewing ring support and climbing shoes. Two climbing shoes are detachable; deduct 100 lbs (45 kg) each. Dimensions shown are without detachable climbing shoes.

<sup>4</sup> Includes 108 hp (80 kW) hoist unit, electrical panel and handrails. Does not include wire rope.

<sup>5</sup> Includes counterjib sections #1, #3, pendant bars and handrails. Counterjib A is required for jibs 180 ft (55.0m) and shorter.

<sup>6</sup> Includes counterjib sections #1, #2, #3, pendant bars and handrails. Counterjib B is required for the 197 ft (60.0m) jib.

<sup>7</sup> Jib Assemblies include jib sections, pendant bars, pendant bar connecting pins and plates, trolley drive unit, trolley wire rope and trolley.



**Morrow Equipment**  
C O M P A N Y, L. L. C.

3218 Pringle Road SE • P O Box 3306 • Salem, Oregon 97302-0306 USA  
Tel. 503.585.5721 • Fax. 503.363.1172 • www.morrowequipment.com

The American home of  
**LIEBHERR**

Atlanta, GA • Charlotte, NC • Chicago, IL • Denver, CO • Honolulu, HI • Houston, TX • Los Angeles, CA • Las Vegas, NV  
Millwood, NY • St. Louis, MO • San Francisco, CA • Seattle, WA • Miami, FL • Tampa, FL • Washington, DC  
Sydney, Australia • Wellington, New Zealand • Vancouver, BC, Canada • Toronto, ON, Canada • México DF, México